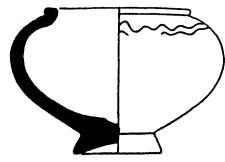
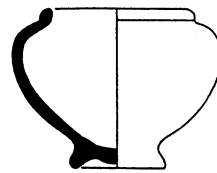


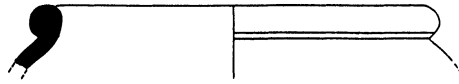
Abb. 19 Este-Santuario di Reitia. Henkelfragmente von Skyphoi aus grauem Ton (Profile). - M. 1 : 4.



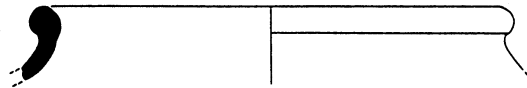
1



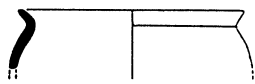
2



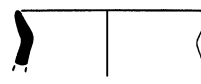
3



4



5



6

Abb. 20 Este-Santuario di Reitia. Töpfe aus grauem Ton (Profile). - M. 1 : 4.

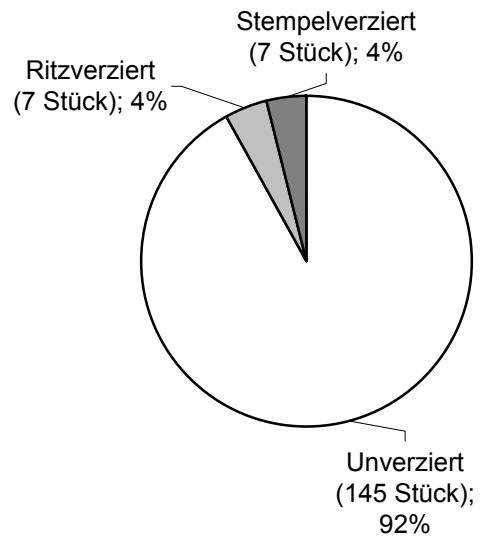


Abb. 21 Este-Santuario di Reitia. Graue Ware: Schalen (Gefäßunterteile). Mengenverhältnis zwischen verzierten und unverzierten Exemplaren.

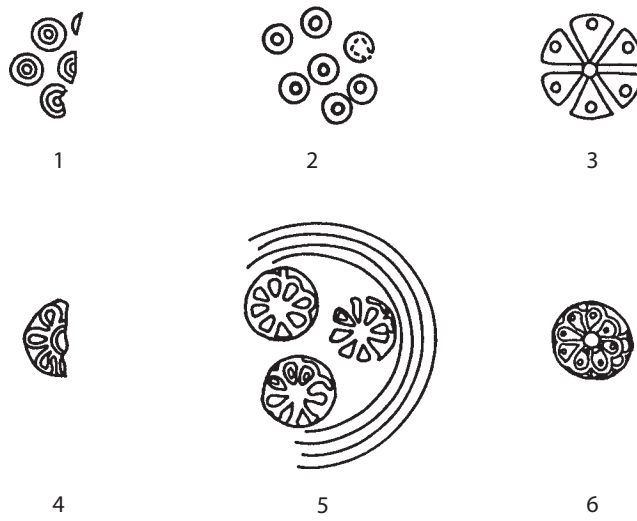


Abb. 22 Este-Santuario di Reitia. Graue Ware: Stempelmuster. - Verschiedene Maßstäbe.

### Die Griechische Importkeramik Venetiens

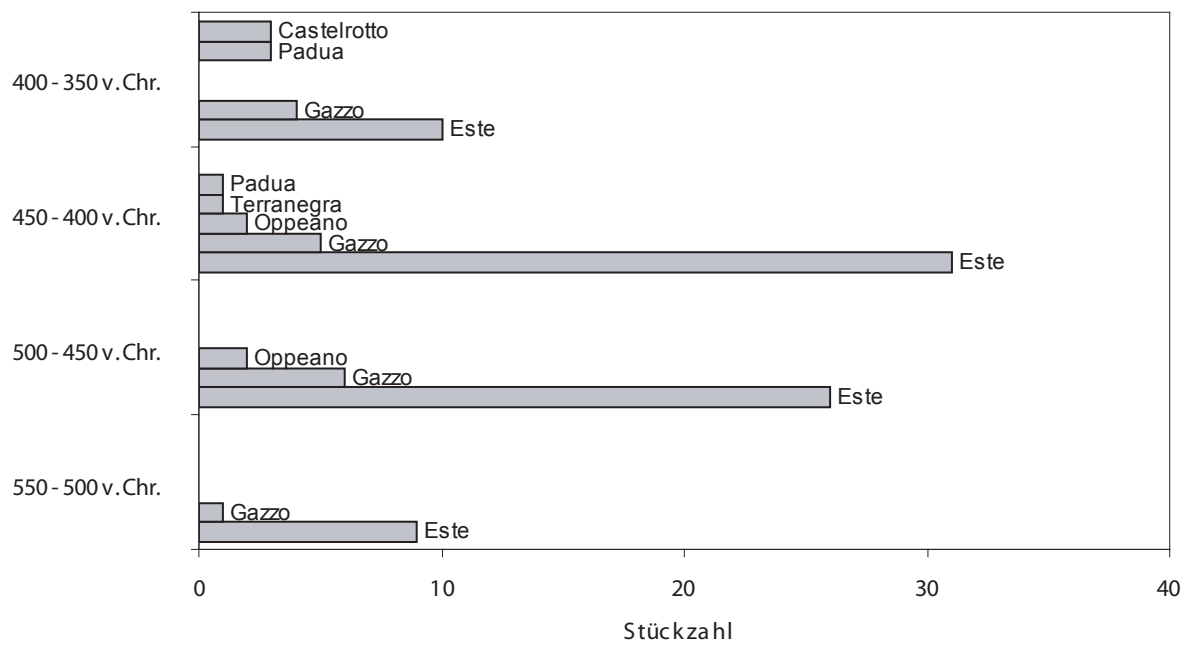


Abb. 23 Die griechische Importkeramik Venetiens (weitgehend nach Gamba 1986).