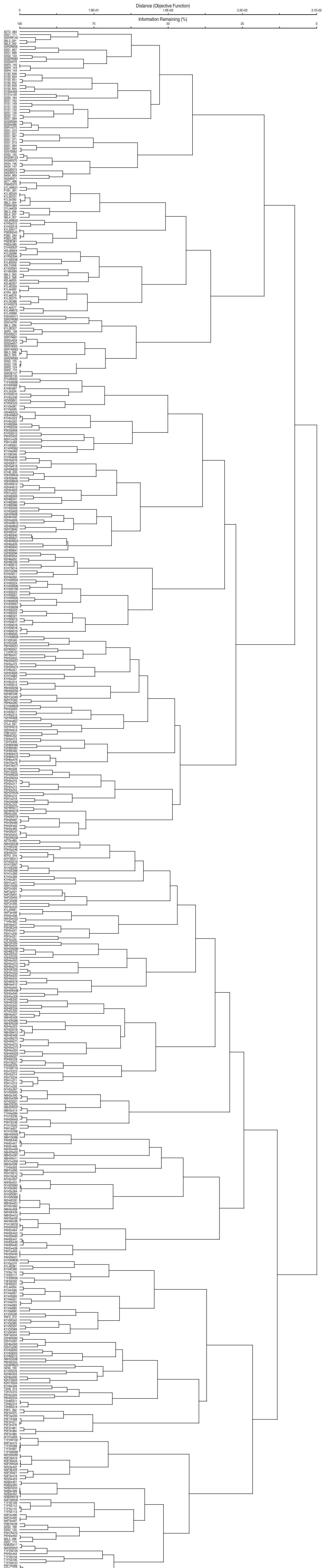


A. T1: Cluster analysis (515 relevés, 403 species; Sørensen index, Flexible beta -5)



A. T4

C = Constancy
Cl = Constancy within the table
Cwg = Constancy within the group
Cog = Constancy outside the group

Table with columns for V1-V6, LF, C, C%, Cl, C%, Cwg, Cwg%, Cog, Cog%, and a list of species names. The table contains a large amount of numerical data representing various metrics for each species across different categories.

Species list including: Euphorbia ephedra, Euphorbia chertana, Pisonia obovata, Zygophyllum prismatocarpum, Amelanus nanus, Pisonia obovata, Euphorbia mauritanica v. foetens, Stoeberia beetzii, Ceratia frutescens, Deltilia canescens, Forskaelia candida, Kleinia longiflora, Tetragonia nudicaulis, Blepharis furcata, Hemeraria stricta, Acanthopis dipsera, Drosanthemum hispidum, Zygophyllum retrofractum, Mesembrythemum squamulosum, Palisotium subnodosum, Antimia waltermeyerii, Rhus populifolia, Euryops multifidus, Dymalophyllum africanum, Salvia garipensis, Ozonoa dispar, 8.1 Asplenium capense, 8.1 Berberis frutescens, 2.7 Monochma incanum, 0.0 Prenia glabra, 0.0 Anemone sp. nov. 22906, 2.7 Rhyssalus emarginata, 0.0 Lycium cinereum, 5.4 Oenothera sp. nov. 22906, 0.0 Berberis sp. nov. 22906, 2.7 Tylosodon reticulatus, 0.0 Antimia s. Cav. sp. nov., 2.7 Tylosodon orbiculata v. orbiculata, 10.8 Crassula muscosa v. rigida, 0.0 Polygala virgata, 0.0 Adiantum sp. nov., 0.0 Othonna opima, 0.0 Othonna arbuscula, 0.0 Mesembrythemum incanum, 0.0 Schwannia herrei, 2.4 Sarcocaulon crassicaule, 0.0 Hoodia elstonii, 17.6 Euphorbia sp. nov., 6.1 Senecio corymbosus, 4.3 Montinia caryophyllacea, 3.9 Indigofera purpurea, 0.0 Sarcocaulon muscosa, 0.0 Euphorbia dregeana, 3.0 Pteronia glabra, 0.0 Heliphiopsis hololepis, 0.0 Aloe ramosissima, 6.1 Hermbstadia glauca, 3.9 Fingertia africana, 2.2 Crassula muscosa v. obtusiloba, 4.3 Diospyros ramulosa, 0.0 Othonna cylindrica, 0.0 Euphorbia cypseliformis, 0.0 Galenia africana, 0.0 Pteronia glauca, 0.0 Ceterach cordatum, 5.9 Polypogon octostriatum, 2.0 Prenia pallens, 0.0 Tripteris sinuata, 2.2 Encoplosiphium africanum, 0.0 Indigofera sp. nov. 22906, 0.0 Annesorhiza 106438, 0.0 Bromus pectinatus, 0.0 Palisotium echinatum, 0.0 Tylosodon wallichii s. wallichii, 2.0 Euryops tenuissimus s. tenuissimus, 0.0 Euryops rhinoceros, 0.0 Memmulella diva, 0.0 Euphorbia francescae, 0.0 Euryops dregeanus, 0.0 Chalcidites robusta, 2.0 Tylosodon rubrovirens, 0.0 Chrysocoma ciliata, 0.0 Zygophyllum flexuosum, 0.0 Euryops laetiflorus, 0.0 Heliphiopsis cornuta v. squamata, 0.0 Othonna arborescens, 0.0 Thesium strictum, 0.0 Stachys lamarskii, 0.0 Thesium congestum, 2.0 Selago robusta, 5.9 Pteronia africana, 2.0 Hermannia cuneifolia, 0.0 Berberis canescens, 2.0 Tripteris brevifolia, 0.0 Antimia miersiana, 2.0 Ruschia Tumidula black fruits, 0.0 Crassula ginea, 0.0 Zygophyllum cordifolium, 0.0 Ruschia vineata, 2.1 Euphorbia hamata, 0.0 Bulbine frutescens, 2.1 Tetragonia schimata, 0.0 Crassula columella, 0.0 Aloe pearsonii, 10.2 Tachyandra bulbifolia, 2.1 Microthylax chlorum, 2.1 Acanthopis spathulata, 2.1 Schizanthus barbatus, 0.0 Tylosodon buchholzianus, 0.0 Crassula muscosa v. muscosa, 0.0 Stapelia garipensis, 2.1 Crassula macowaniana, 2.1 Crassula expansa, 2.1 Corophyllum jucundum, 0.0 Adromischus filicaulis s. filicaulis, 0.0 Corophyllum meyeri, 0.0 Acrotome pallenscens, 0.0 Pachypodium namaquanum, 0.0 Commiphora capensis, 2.0 Astrida alba, 9.4 Tetragonia frutescens, 8.4 Galenia crystallina, 0.0 Senecio spinescens, 6.3 Euphorbia gummiifera, 0.0 Hypertelis salsoloides, 0.0 Euphorbia garipiana, 0.0 Chrysocoma pulegioides, 0.0 Merodora juncea, 0.0 Nymania capensis, 0.0 Hoodia gordonii, 0.0 Galenia miersiana, 6.3 Heliphiopsis variabilis, 0.0 Leyseria tenella, 4.3 Onoplosiphium sulcifolium, 0.0 Eriosepogon scaber, 0.0 Onoplosiphium piliferum, 2.1 Hermannia garipiana, 4.3 Wahlenbergia palata, 2.1 Pteronia lucidifolia, 2.1 Zygophyllum leptotaphum, 0.0 Chalcidites capensis, 4.3 Senecio arenarius, 3.8 Ruschia brevibracteata, 0.0 Lycium frutescens, 0.0 Salvia zeyheri, 2.1 Eriosepogon ericoides, 2.1 Lepidochloa schultzei, 0.0 Cordalium miersiana, 0.0 Phyllobolus oculatus, 0.0 Spargosiphium anomala, 2.1 Tripteris polycephala, 0.0 Trichostema ligulata, 2.1 Gazania lichtensteinii, 0.0 Lotononis strigilosa, 0.0 Antidia adscensionis, 0.0 Lotononis fasciata, 0.0 Stoeberia frutescens, Zygophyllum patenticaule, Jamesbrittenia maritima, 0.0 Andria serotina, Felicia ovata, Felicia filifolia s. schaeferi, Palisotium articulatum, Palisotium carnosum, Hermannia amoena, Microloma calycatum, Rastonia calva, Senecio sisymbriifolius, Amelcus epilaecus, Curtoria decoua, Rhus urticata, Rhyssalus pumilus, Stoeberia arborea, Asplenium retrofractum, Senecio maydia, Blepharis pruinosa, Hermannia althaeifolia, Cephalophyllum rigidum, Hermannia scabra, Albucca spiralis, Heliphiopsis filifera, Ruschia abbreviata, Lampranthus 6-valves, Zygophyllum foetidum, Eriosepogon spinescens, Palisotium desertorum, Acrotis fastuosa, Othonna furcata, Eriosepogon obtusiloba, Albucca maxima, Ruschia brevifolia, Tylosodon frutescens, Helichysum obtusum, Phyllobolus decaudus, Ruschia leucoparva, Andria molliflora s. molliflora, Trichostema muricata, Eriosepogon ciliata inand, Senecio pectinatus, Dimorphotheca sinuata, Phyllobolus decurvatus, Ceratia namaquensis, Chrysocoma schimata, Monochma mollissimum, Boscia albitrunca

A. T6

C = Constancy
Ct = Constancy within the table
Cwg = Constancy within the group
Ccg = Constancy outside the group

Table with columns: Fst1, Fst2, Fst3, Pgt1, Pgt2, Pgt3, Pgt4, Pgt5, CLUSTER, H-INDEXX, EVENESS, SPEC No Σ, COV10 Σ, and various cluster codes (Fst1-Fst5, Pgt1-Pgt5, CLUSTER, H-INDEXX, EVENESS, SPEC No Σ, COV10 Σ).

Σ data set, Flood plains, NORTH, GEO, C, C%, Ct, C1%, Cwg, Cwg%, Ccg, Ccg%

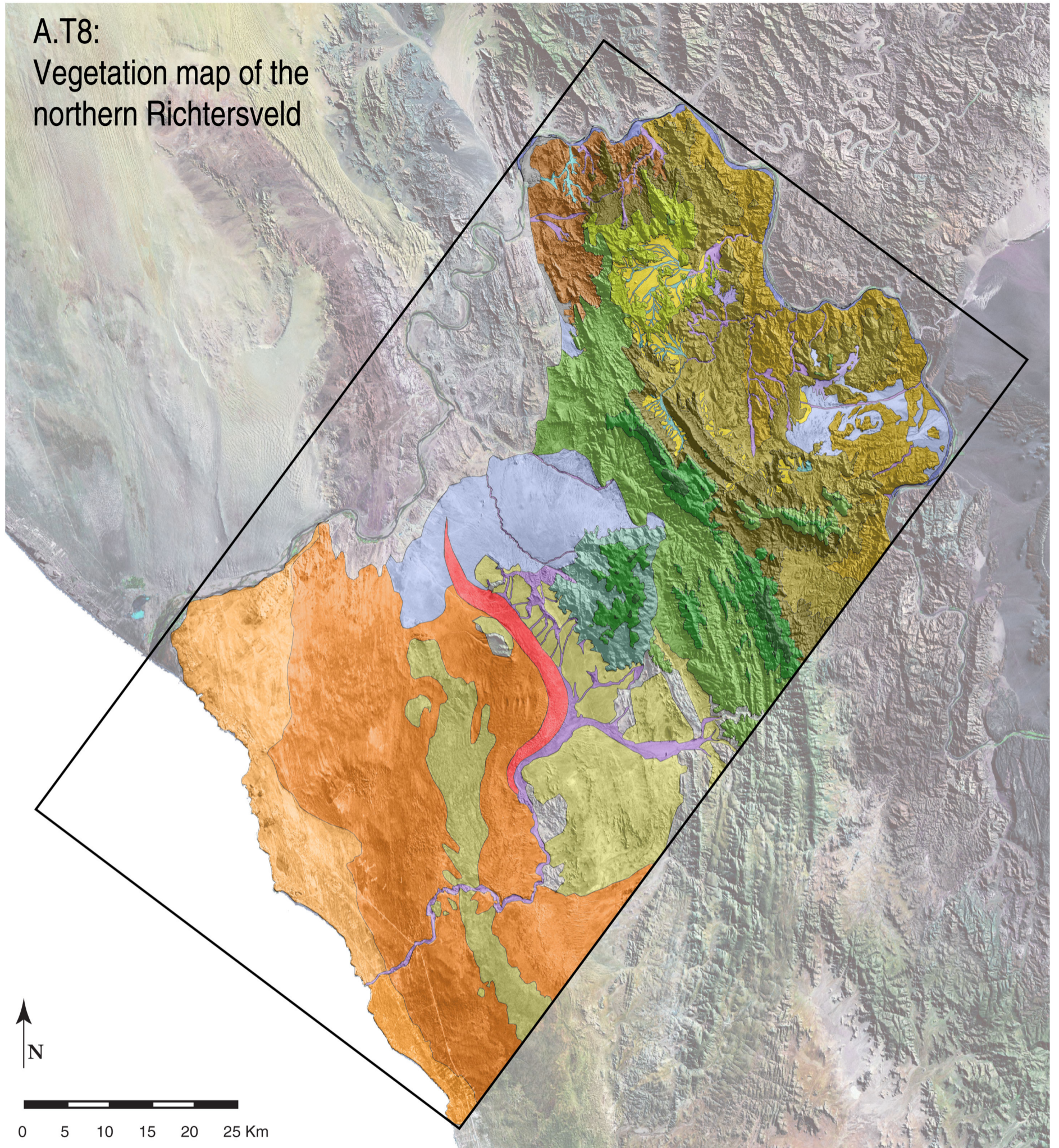
Main data table with columns for species names (e.g., Helophila variabilis, Oncosiphon piliferum, Tetragonia fruticosa) and rows for various species, including their distribution codes and associated values.

A. T7

Table with columns: V1, V2, V3, V4, V5, V6, NUMBER OF PLOTS, AN, LF, and a grid of species names and codes. The table lists numerous plant species and their associated codes across a grid of plots.

Table with columns: V1, V2, V3, V4, V5, V6, NUMBER OF PLOTS, AN, LF, and a grid of species names and codes. This table continues the list of species and codes from the previous table.

A.T8:
Vegetation map of the
northern Richtersveld



Succulent Karoo

Sandy habitats of the coastal plain

- *Zygophyllum clavatum* - *Euphorbia brachiata* ass. 1111
- *Zygophyllum morgsana* - *Hermannia trifurca* ass. 1112
- *Cladoraphis spinosa* - *Limeum fenestratum* sub-ass. 11122

Silty habitats of the coastal plain and inner mountain basins

- *Cheiridopsis robusta* - *Ruschia leucosperma* ass. 1121
- *Aridaria noctiflora* - *Trachyandra muricata* ass. 1122

Habitats of the Orange River terraces

- *Brownanthus pubescens* ass. 1131

Slope habitats within the mountain area

- *Elytropappus rhinocerotis* - *Merxmuellera dura* sub-ass. 12111
- *Pteronia divaricata* - *Berkheya canescens* sub-ass. 12112
- *Antizoma miersiana* - *Ruschia Tumidula* black fruits ass. 1212
- *Crassula grisea* - *Ruschia elineata* ass. 1213
- *Chrysocoma puberula* - *Menodroa juncea* all. 122

Nama Karoo

Habitats of gravelly flood plains and drainage lines

- *Leucophrys mesocoma* - *Monechma mollissimum* ass. 2121
- *Monechma spartioides* - *Cadaba aphylla* ass. 2122
- *Prenia tetragonia* - *Psilocaulon subnodosum* ass. 2115
- *Sisyndite spartea* - *Rogeria longiflora* ass. 2114

Open sand plains

- *Stipagrostis obtusa* com. 3212

Gallery forests along the Orange River banks

- *Rhus pendulina* - *Ziziphus mucronata* com. 3102

Slope habitats within the mountain area

- *Pachypodium namaquanum* ass. 2211
- SW: *Acrotome pallescens* - *Astridia alba* ass. 1214, NE: *Zygophyllum microcarpum* ass. 2212
- S: *Brownanthus nucifer* - *Ruschia abbreviata* ass. 2213, N: *Euphorbia decussata* ass. 2214
- *Euphorbia virosa* - *Euphorbia gariepina* ass. 2215