

Data stewards at TU Delft: some practices that really worked



Yan Wang
y.wang-16@tudelft.nl

Workshop on Data stewardship 16 November, 2020





Impact for a better society

TU Delft Strategic Framework 2018-2024

Research and Education in the Open Era

TU Delft Strategic Plan Open Science 2020-2024

TU Delft Open Access - 2019

63%
of TU Delft articles published open access in 2018

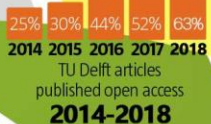
25.000
student theses in TU Delft education repository

500
open access articles sponsored by TU Delft Open Access Fund

47.000
publications in TU Delft research repository, including **9.200** dissertations

12

Special open access TU Delft deals with PLoS, Hindawi, MDPI, Frontiers, Copernicus, IWA, PeerJ and SciPost






TU Delft articles published open access 2014-2018

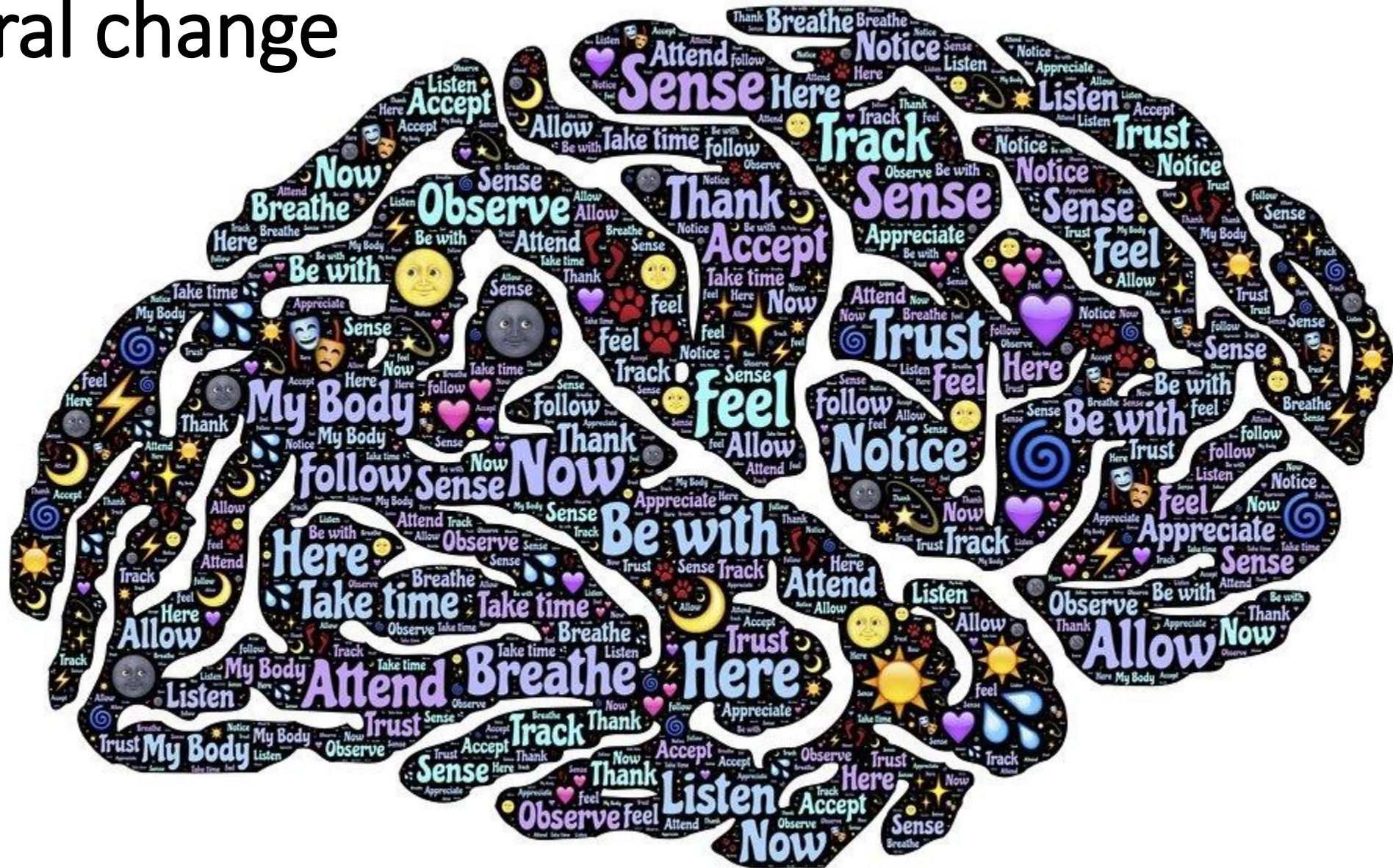


TU Delft Research Data Framework Policy

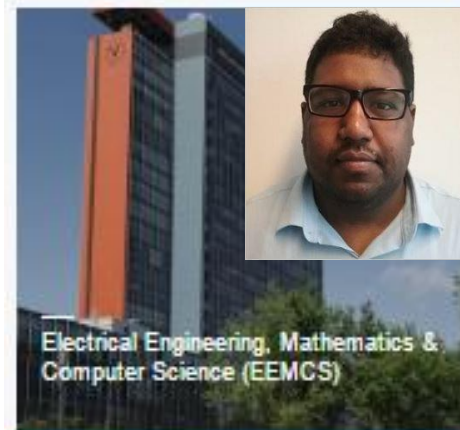
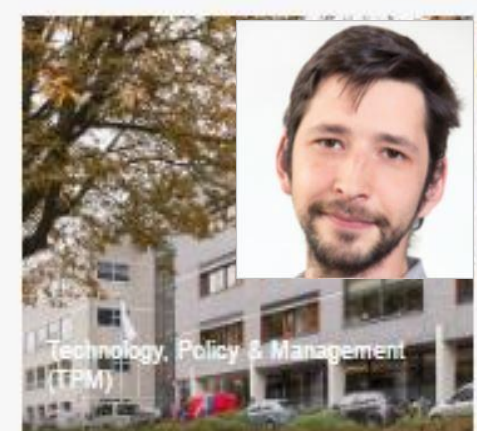
Cultivate Open & Good Research via RDM

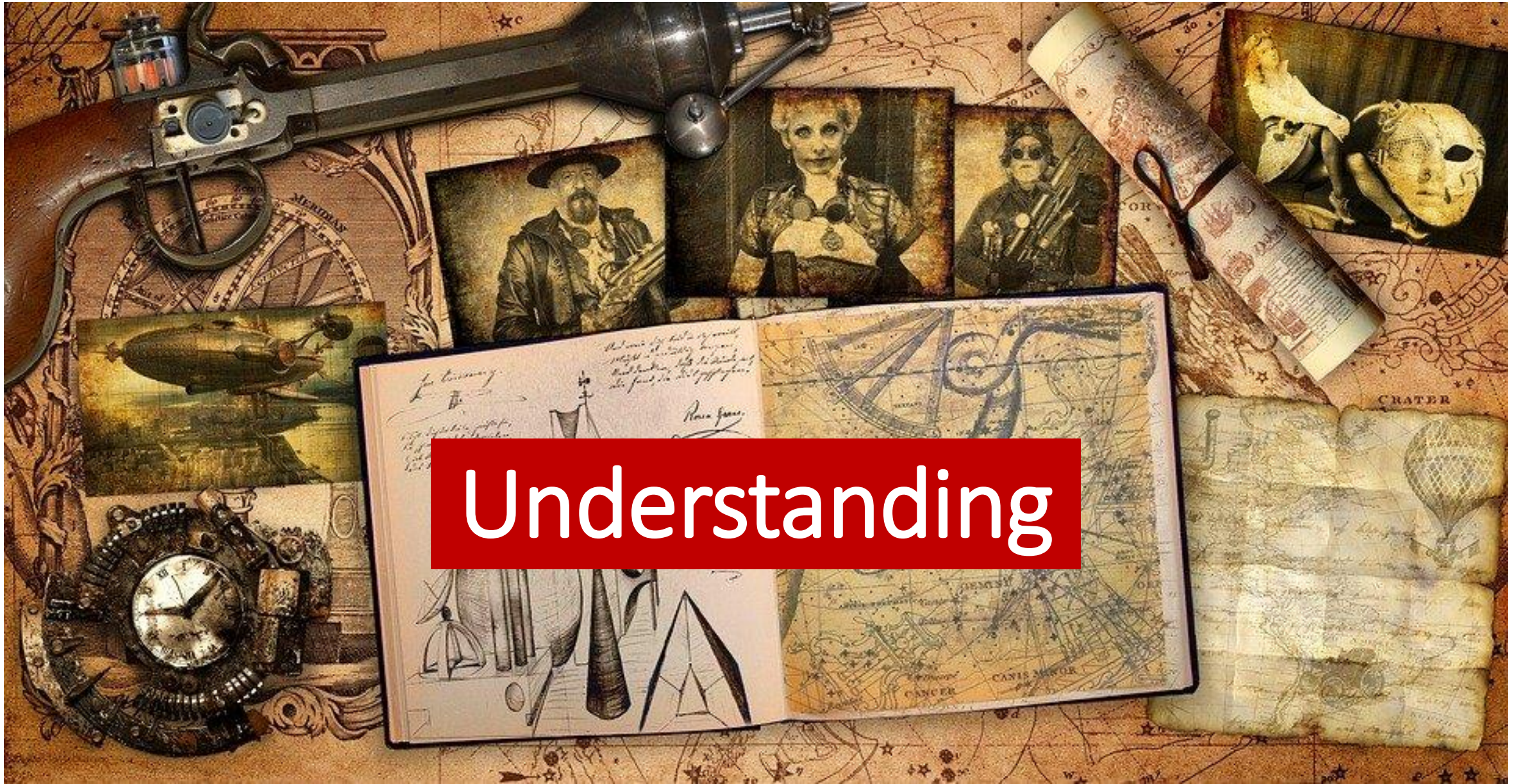
	Objective	Focus	Approach	Outcome
Institution 	Open & Good Research	Way of Rewarding	Policy Making & Evaluation	Data Management Policy
Research 	Data Management Practices	Way of Researching	Research planning & training	Open & Good Research
Infrastructure 	Secure & Available Datasets	Way of Curating	ICT facilitation	Sustainable system solution

Cultural change



Data Steward Team



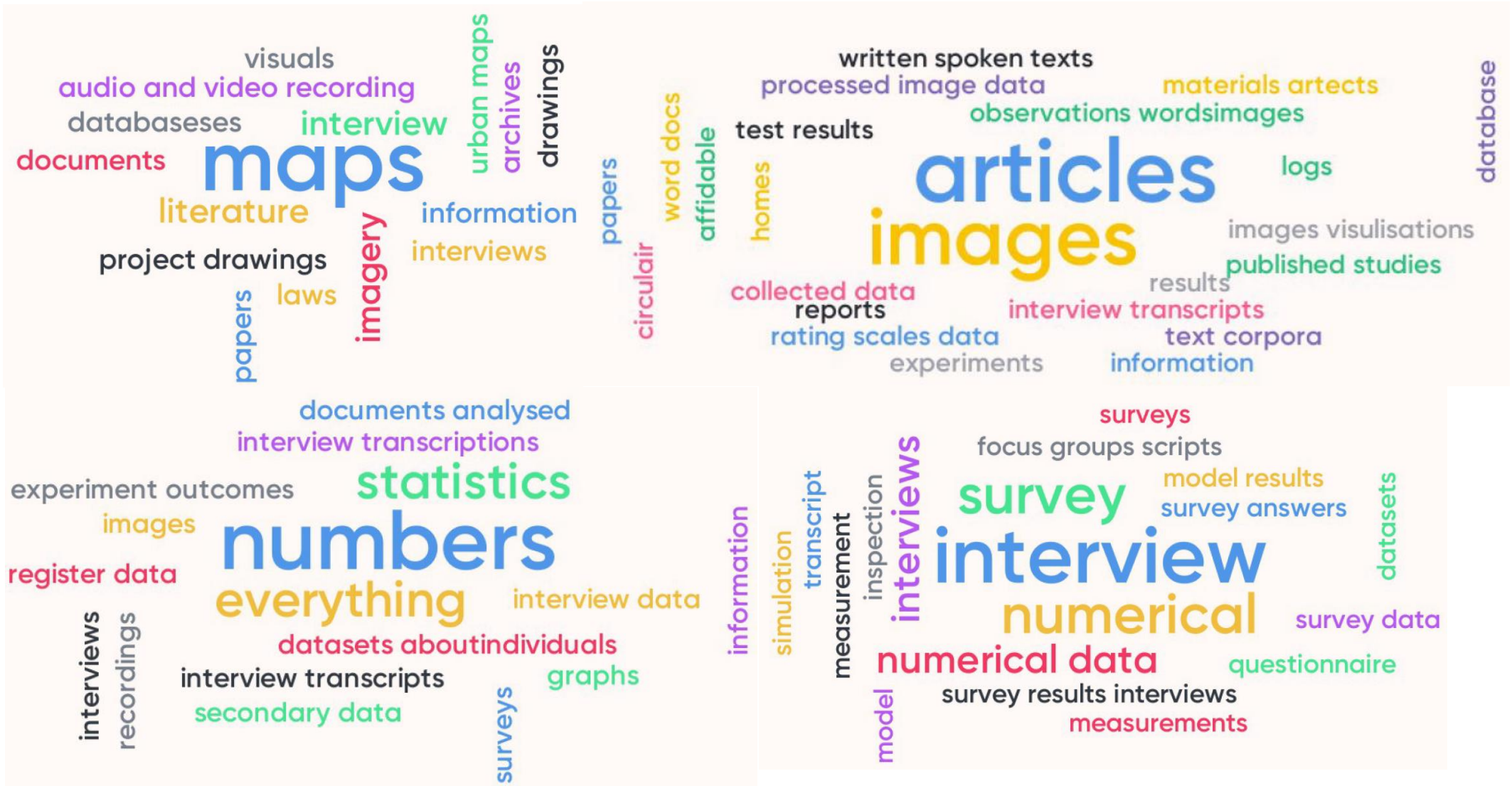


Understanding

Strategy Innovation



Diversity

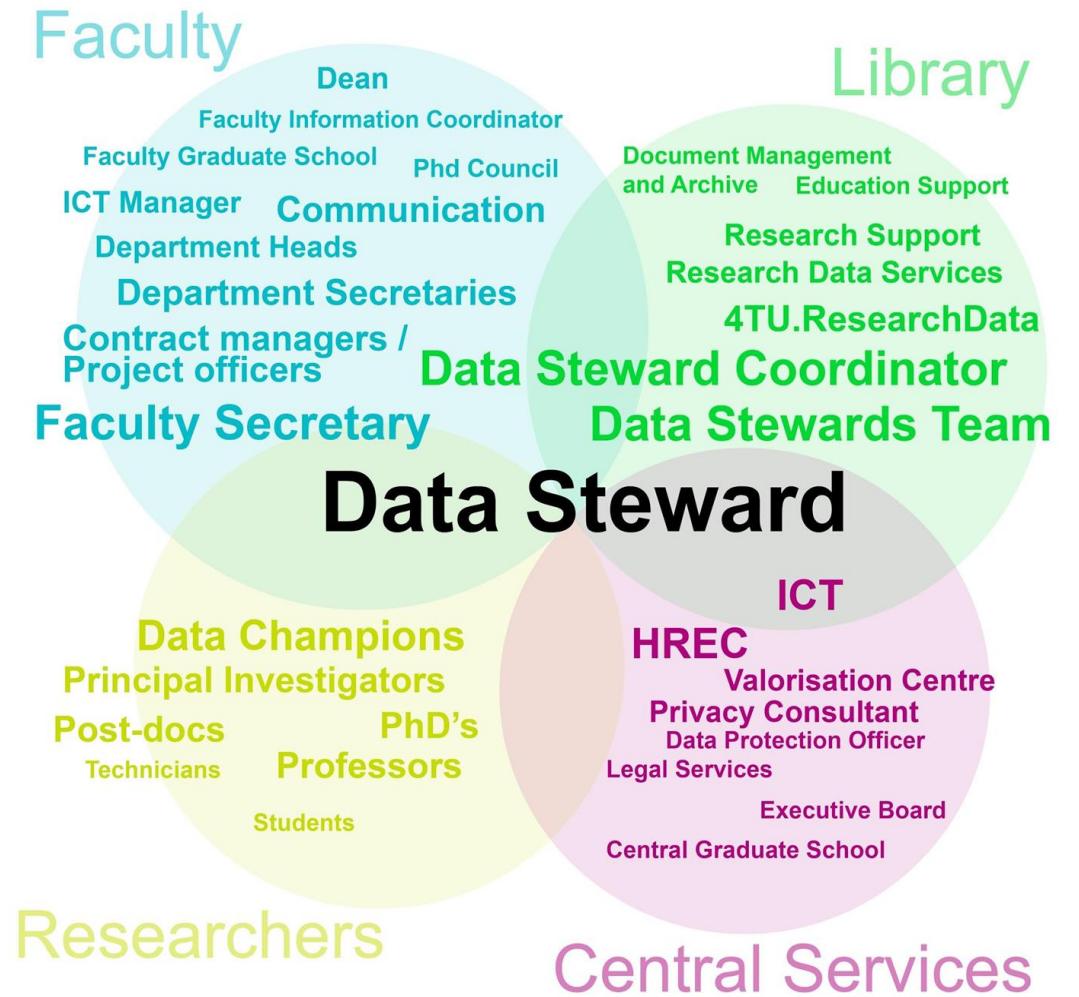
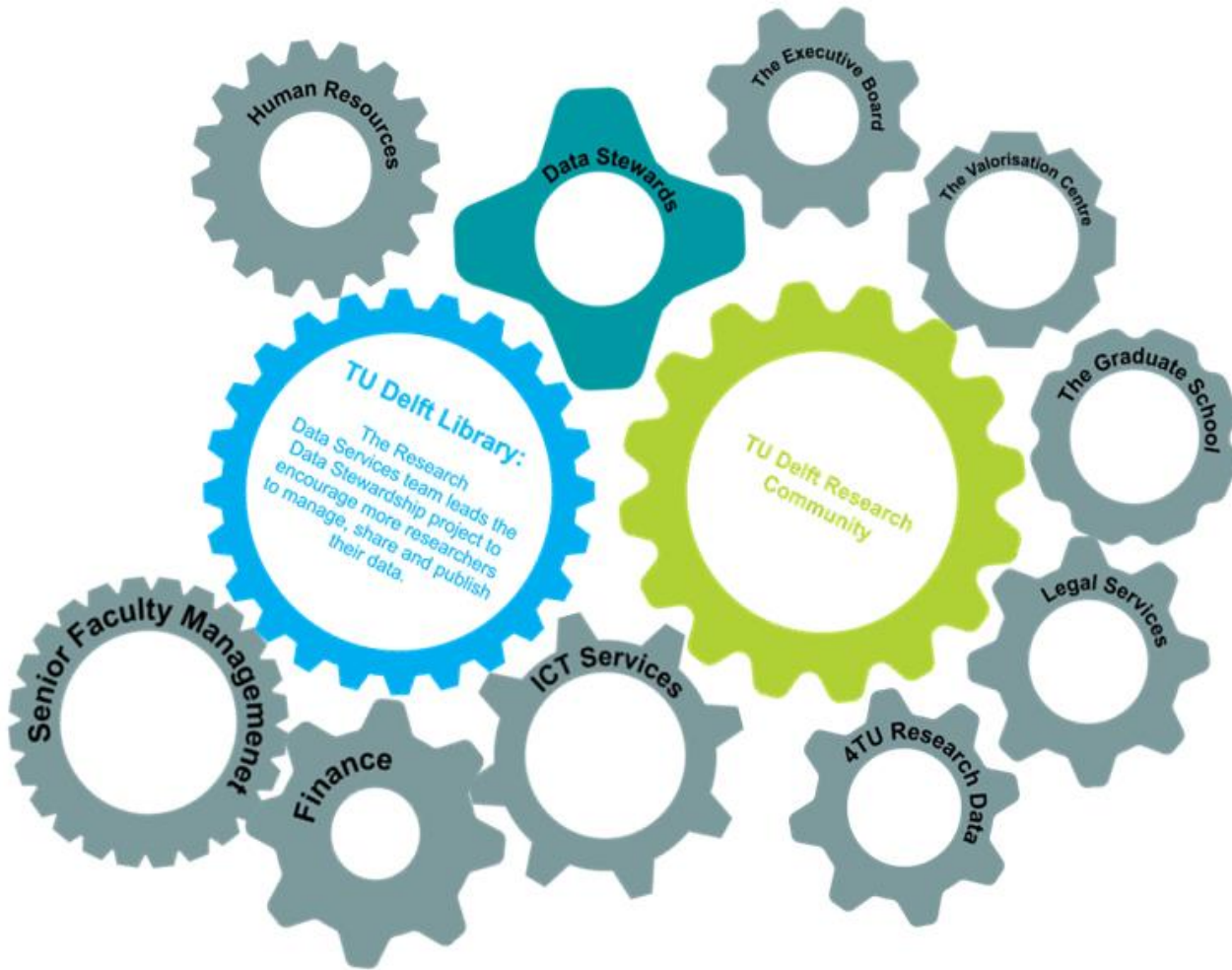




University services



Operational synergy





Listening & Communicating

Trust Establishing

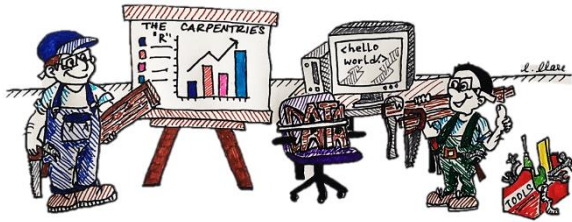




Can't do it alone

Building the community





DATA CHAMPION
l. llare

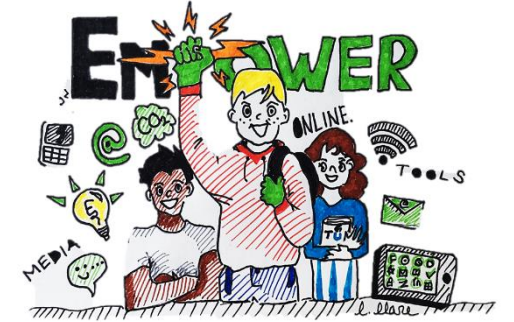


Illustration by Connie Clare



Shalini Kurapati

@shalini_kr

Following

First software carpentry workshop at TU Delft in progress. Day 1: We began the day with task automation with the Unix shell.

@thecarpentries @4TUResearchData @martateperek @YaseminTurkyilm



12:53 AM - 29 Nov 2018

2 Retweets 12 Likes



2



12



Five selfish reasons to work reproducibly

TU Delft

Future forward: Science in the open era



🕒 25 Sept 2019, 16.00-17.00

📍 Orange Room, TUD Library

👤 Dr Florian Markowetz



Examples of disciplinary specific outreach (1)

Discipline:

- Experimental research in life sciences and engineering

Challenges:

- Need for electronic lab notebooks (ELNs):
 - Searchable & traceable
 - Digital documentation, & linking of data, methods & samples

Outreach activities:

- Collected researchers' needs & expectations from ELNs
- Recruited researchers to ELN pilot and collected their feedback
- Regular communication (emails & events)

Outcome:

- ELN Working Group (DS, library, ICT Innovation)
- Successful pilot
- Currently two ELNs offered to researchers
- Regular user meetings
- User mailing list



Esther Plomp
Data Steward, TU Delft



Yasemin Türkyilmaz
Data Steward, TU Delft

Examples of disciplinary specific outreach (2)

Discipline:

Design, Architecture &
Built Environment
(humanities)

Outreach activities:

- Engagement workshop on specific research topics (maps, geospatial data etc.)
- Community building: collaboration, data tooling pilot

Challenges:

- Scattered across faculties
- Data sharing is not a tradition
- Lack of proper infrastructure

Outcome:

- TUD DH community
- Grant theme for collaboration
- Data expert groups



Jeff Love
Data Steward, TU Delft



Yan Wang
Data Steward, TU Delft



Keep the wheels turning!